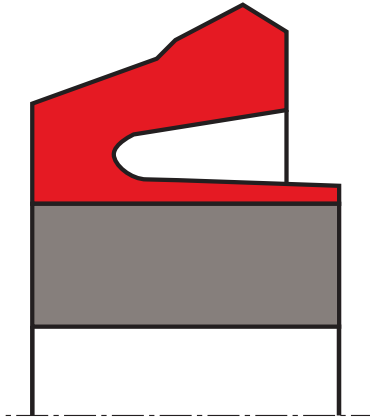


oil seal R109

seal spec

**description**

rotary shaft seal external lip made of elastomer which has an inner casing reinforced with impregnated fabric. the fabric reinforcement is bonded firmly to the elastomer component.

application**category of profile**

molded/standard/trade product only.

single acting rotary shaft seal**area of application**

sealing of rotating machine elements such as shafts, hubs and axle in large machinery and plant construction, e.g. wind energy generators, construction machinery, rolling mills and shipbuilding. R109 can be used in difficult installation conditions.

advantages

sealing ring is used, in case of adequate lubrication by the medium to be sealed, preferably where shafts pass through walls in mills and large gearboxes in heavy machinery manufacture.

- particularly robust static part
- lasting radial contact pressure
- highly wear-resistant.

media

good chemical resistance to many mineral oils and greases.

operating parameters & material

material	temperature	max. surface speed	max. pressure
s-mart NBR 80 with impregnated cotton fabric	-30 °C ... +100 °C	15 m/s	0,2 bar (0,02 MPa)
s-mart FKM 80 with impregnated cotton fabric	-20 °C ... + 180 °C	15 m/s	0,2 bar (0,02 MPa)

the stated operation conditions represent general indications. it is recommended not to use all maximum values simultaneously. surface speed limits apply only to the presence of adequate lubrication film.

surface quality

surface roughness	Rtmax [μm]	Ra (μm)
contact area	≤2,5	≤0,6
housing	≤15	≤4

tolerance recommendation

seal housing tolerances	
Ød	h9
ØD	H8

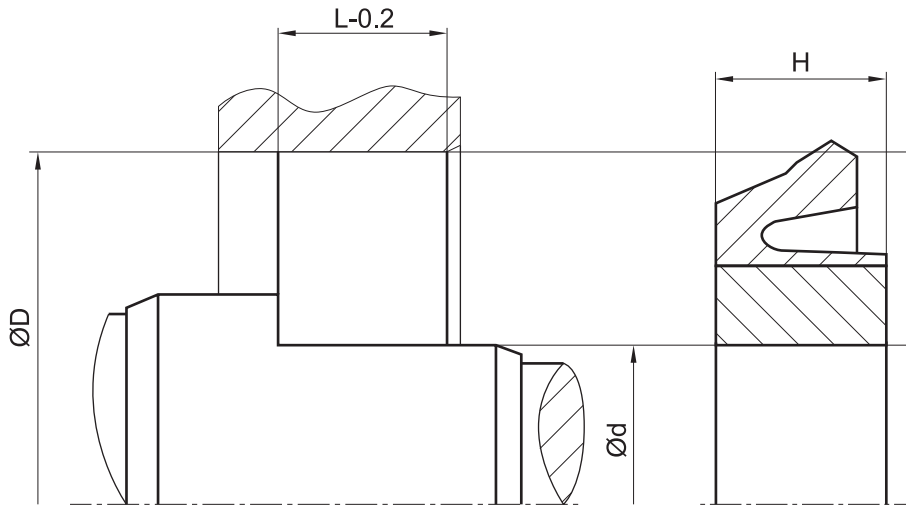


fitting & installation

suitable tool should be used for installation. it is recommended that the installation housing is designed to provide the rotary shaft seal with axial support.

seal & housing recommendations

please note that we are able to produce those profiles to your specific need or any non standard housing. for detail measurements, please see seal-mart catalog...



don't hesitate to contact our technical department for further information or for special requirements (temperature, speed etc.), so that suitable materials and/or designs can be recommended.